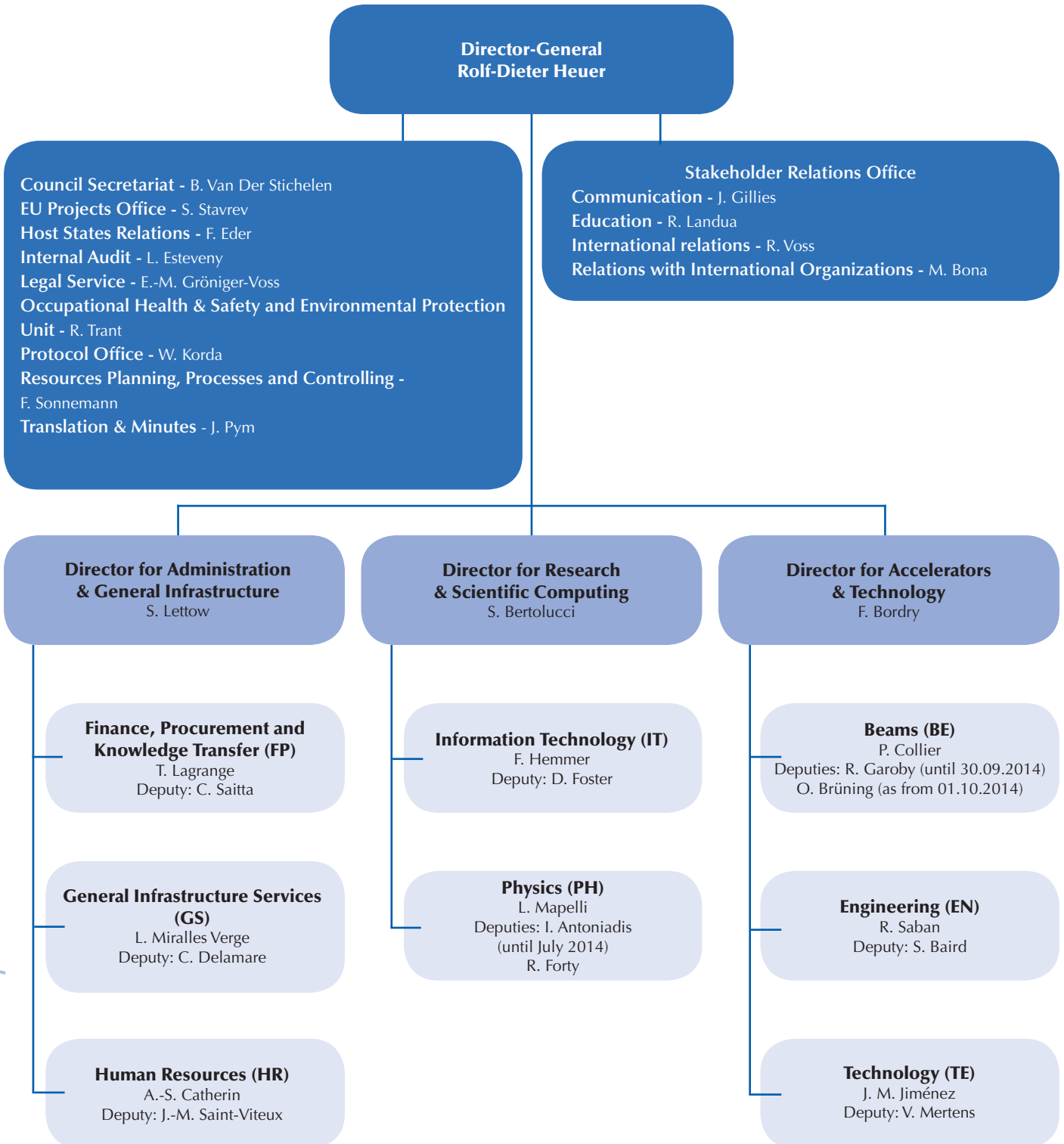


Internal Organization

Sectors
Departments



Departments & Groups

S DIR	Director-General Office Sector	HR	Human Resources Department	IT-PES	Platform & Engineering Services
DG	Director-General	HR-CB	Compensation & Benefits	IT-SDC	Support for Distributed Computing
DG-AS	Administrative Support	HR-DHO	Department Head Office	PH	Physics Department
DG-CO	Communication	HR-FL	Frontline	PH-ADE	ATLAS Detector Systems
DG-CS	Council Secretariat	HR-LD	Learning and Development	PH-ADO	ATLAS Detector Operation
DG-DG	Office of the Director-General	HR-SA	Staff Association Secretariat (administratively attached to HR)	PH-ADP	ATLAS Data Processing
DG-DI	Directorate Office	HR-TA	Talent Acquisition	PH-ADT	ATLAS DAQ & Trigger
DG-EDU	Education	S AT	Accelerator & Technology Sector	PH-AID	ALICE Detector & Systems
DG-EU	EU Projects Office	BE	Beams Department	PH-AIO	ALICE Management & Engineering Support
DG-IA	Internal Audit Service	BE-ABP	Accelerator & Beam Physics	PH-AIP	ALICE Physics & Computing
DG-IR	International Relations	BE-ASR	Administration, Safety & Resources	PH-CMD	CMS DAQ & Trigger
DG-LS	Legal Service	BE-BI	Beam Instrumentation	PH-CMG	CMS Physics, Software & Computing
DG-PRT	Protocol Office	BE-CO	Controls	PH-CMO	CMS Organization
DG-RH	Relations with Host States	BE-HDO	Head of Department's Office	PH-CMX	CMS Experiment Systems
DG-RPC	Resources Planning, Processes and Controlling	BE-OP	Operation	PH-DI	Office of the Department Leader
DG-TM	Translation & Minutes	BE-RF	Radio Frequency	PH-DT	Detector Technology
DGS	Occupational Health & Safety and Environmental Protection Unit	EN	Engineering Department	PH-ESE	Electronics Systems for Experiments
DGS-DI	Head Office of the HSE Unit	EN-CV	Cooling & Ventilation	PH-LBC	LHCb Computing
DGS-RP	Radiation Protection Group	EN-EL	Electrical Engineering	PH-LBD	LHCb Detector
DGS-SEE	Safety Engineering & Environment Group	EN-GMS	General Management & Secretariats	PH-LBO	LHCb Co-ordinators Office
S AI	Administration and General Infrastructure Sector	EN-HDO	Head of Department's Office	PH-LCD	Linear Collider Detector
FP	Finance, Procurement & Knowledge Transfer Department	EN-HE	Handling Engineering	PH-SFT	Software Design for Experiments
FP-DI	Office of the Department Head	EN-ICE	Industrial Controls & Engineering	PH-SME	Small & Medium Experiments
FP-FAS	Financial & Accounting Services	EN-MEF	Machines & Experimental Facilities	PH-TH	Theoretical Physics
FP-KT	Knowledge Transfer	EN-MME	Mechanical & Materials Engineering	PH-TOT	TOTEM Experiment
FP-PI	Procurement & Industrial Services	EN-STI	Sources, Targets & Interactions	PH-UAD	Antiproton Users
GS	General Infrastructure Services Department	TE	Technology Department	PH-UAI	ALICE Users
GS-AIS	Advanced Information Systems	TE-ABT	Accelerator Beam Transfer	PH-UAT	ATLAS Users
GS-ASE	Access, Safety & Engineering Tools	TE-CRG	Cryogenics	PH-UC3	CTF3 Users
GS-DI	Head of Department's Office	TE-EPC	Electrical Power Converters	PH-UCM	CMS Users
GS-FB	Fire Brigade	TE-HDO	Head of Department's Office	PH-UFT	Fixed Target Users
GS-IS	Integrated Services	TE-MPE	Machine Protection & Electrical Integrity	PH-UGC	General Collaboration Users
GS-ME	Medical Service	TE-MSC	Magnets, Superconductors & Cryostats	PH-UHC	Other LHC Users
GS-SE	Site Engineering	TE-RPA	Resources Planning Administration (until 30.09.2014)	PH-UIS	ISOLDE Users
GS-SIS	Scientific Information Service	TE-VSC	Vacuum, Surfaces & Coatings	PH-ULB	LHCb Users
GS-SMS	Service Management & Support	S RC	Research & Scientific Computing Sector	PH-ULD	Linear Collider Detector Users
		IT	Information Technology Department	PH-UNT	n_TOF Users
		IT-CF	Computing Facilities	PH-UOP	Other Physics Users
		IT-CIS	Collaboration and Information Services	PH-URD	R&D Users
		IT-CS	Communication Systems	PF	Pension Fund
		IT-DB	Database Services	PFMU	Pension Fund Management Unit
		IT-DI	Departmental Infrastructure	PF-BA	Benefits and Accounting
		IT-DSS	Data & Storage Services	PF-AAR	Asset Allocation and Risk Management
		IT-OIS	Operating Systems & Infrastructure Services	PF-IPM	Internal Portfolio Management
				PF-MO	Middle Office
				PF-GMS	General Management Support