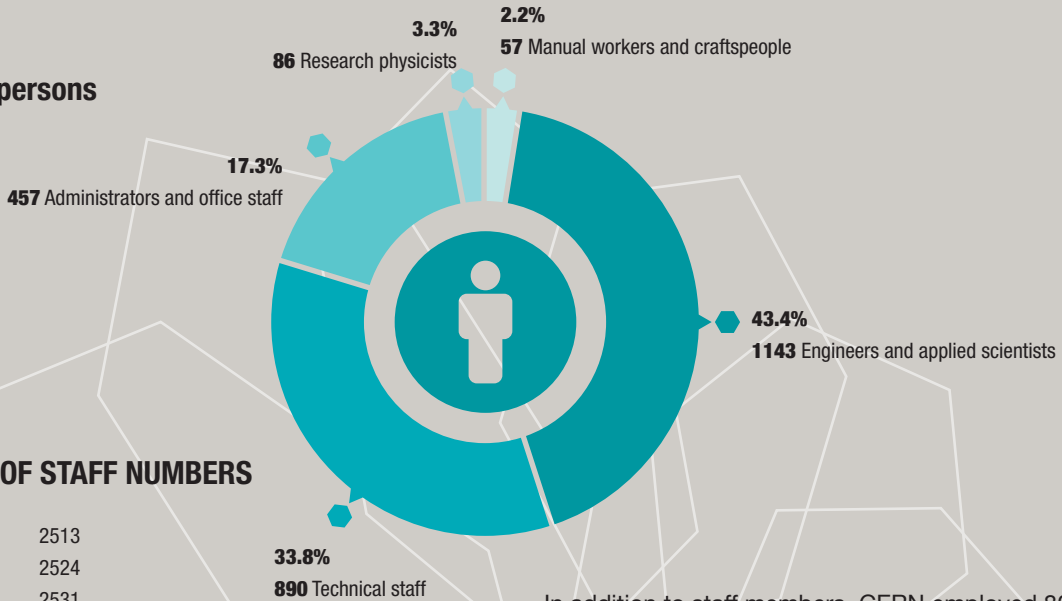


# CERN IN FIGURES

## CERN STAFF

Total: 2633 persons



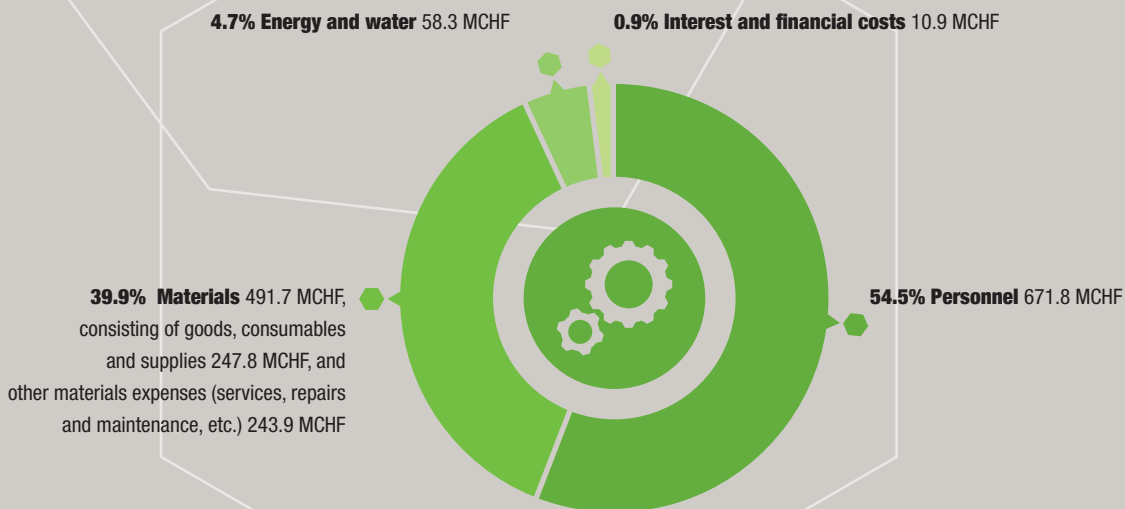
## EVOLUTION OF STAFF NUMBERS

2013	2513
2014	2524
2015	2531
2016	2560
2017	2633

In addition to staff members, CERN employed 807 fellows (including TTE technicians), trained 579 students and apprentices and hosted 1277 associates in 2017. CERN's infrastructure and services are used by a large scientific community of 12 236 scientists

## CERN EXPENSES

Total expenses 1232.7 MCHF



In 2017, more than 40% of CERN's budget was returned to industry through materials, utilities and services. CERN aims to balance its expenditure across its Member States (see p. 35).