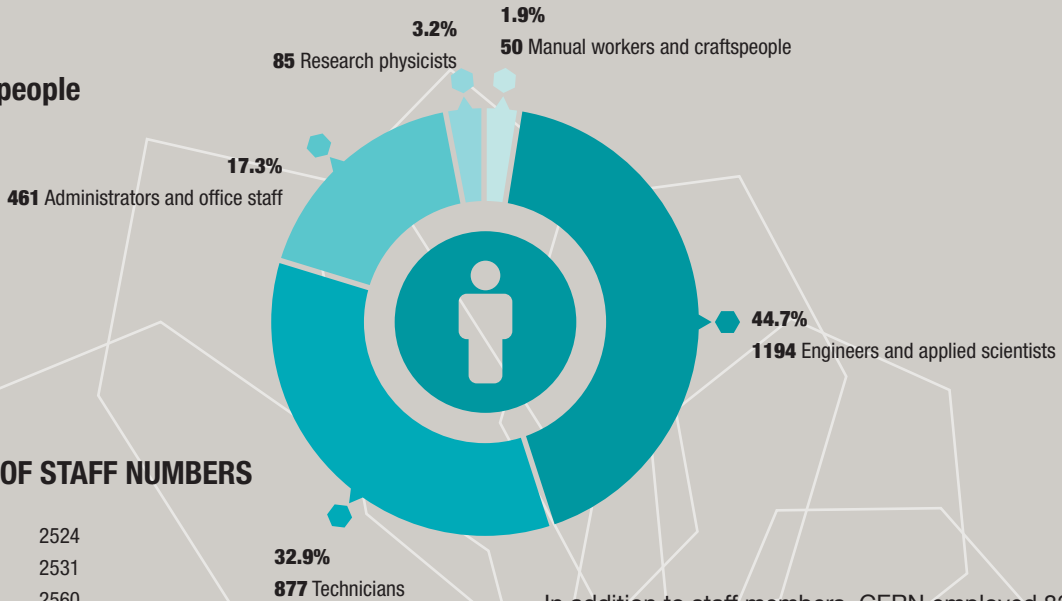


CERN IN FIGURES

CERN STAFF

Total: 2667 people



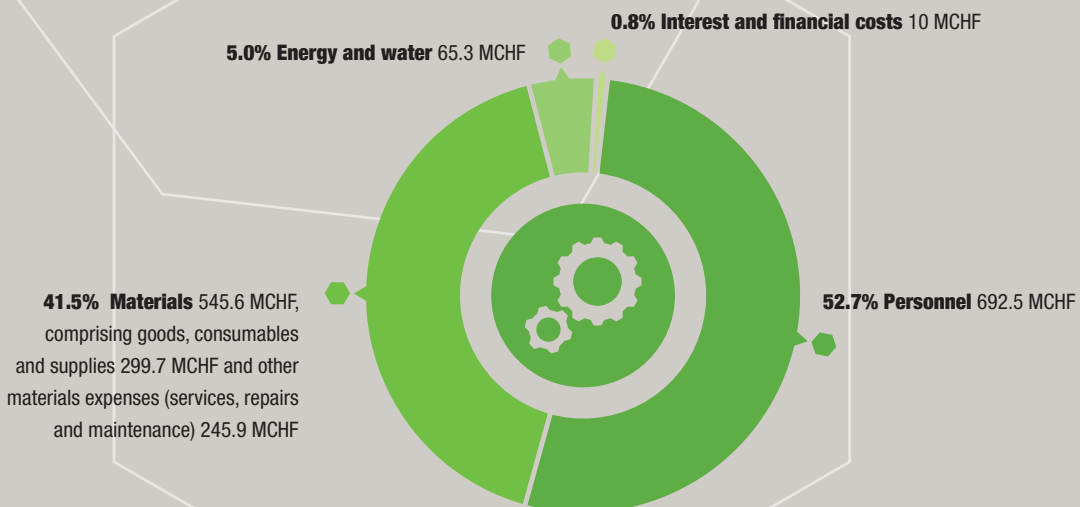
EVOLUTION OF STAFF NUMBERS

2014	2524
2015	2531
2016	2560
2017	2633
2018	2667

In addition to staff members, CERN employed 839 fellows (including TTE technicians), trained 547 students and apprentices, and hosted 1320 associates in 2018. CERN's infrastructure and services are used by a large scientific community of 12 569 scientists (see p. 12).

CERN EXPENSES

Total expenses 1313.4 MCHF



In 2018, more than 40% of the CERN budget was returned to industry through the procurement of supplies and services. CERN strives to ensure a balanced industrial return for its Member States (see p. 33).