

17 Organization

D. Einfeld

The organization of the SEE-LS should be close to that of similar facilities in Europe and of SESAME. The overall responsibility is with the Council of Delegates from the member states. The Council determines the budget and makes the general decisions concerning the beam lines and upgrade of the machine. The Director follows the decisions of the Council, is responsible for the day-to-day management of the facility, and has to make sure that a high-brilliance and stable photon beam is available to users. Generally, two advisory committees are nominated by the Council to follow up on the machine design and construction (Machine Advisory Committee) and the development of scientific activities (Science Advisory Committee). In general, the Director should follow the advice of both committees.

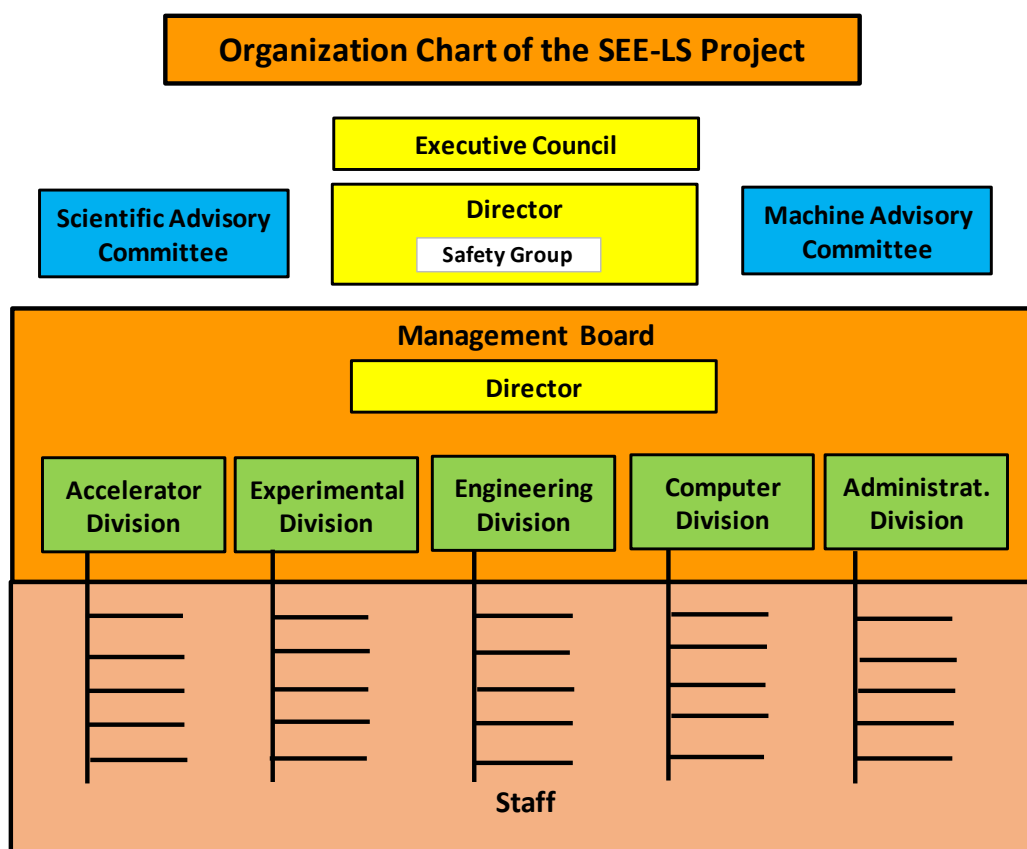


Fig. 17.1: Proposed organizational chart for the SEE-LS project

Under the Director are different divisions, including the accelerator division, experimental division, engineering division, computing division, and administrative division. The heads of the divisions and the Director together form the 'Management Board'. The Management Board should meet once per week to discuss all issues concerning the facility.

The accelerator division is in charge of the design of the lattice and the design and construction of the magnets and insertion devices, diagnostics, power supplies, RF systems, and all other components; it is of course in charge of the operation of the machine. The experimental division uses the beam lines to conduct scientific research and is responsible for the operation of the beam lines. The engineering division provides all the support needed by the accelerator and experimental divisions, such as electrical and cooling systems, civil engineering services, the vacuum system, and mechanical engineering services. The computing division will provide general informatics, software, and hardware controls for the accelerator and experimental divisions. Last but not least, the administrative division

will take care of personnel issues, contracts, finance, and accounts (see Fig. 17.2). The management board is composed of the heads of the five divisions, led by a general director. The security and safety group and the communication group are under the direct authority of the general director.

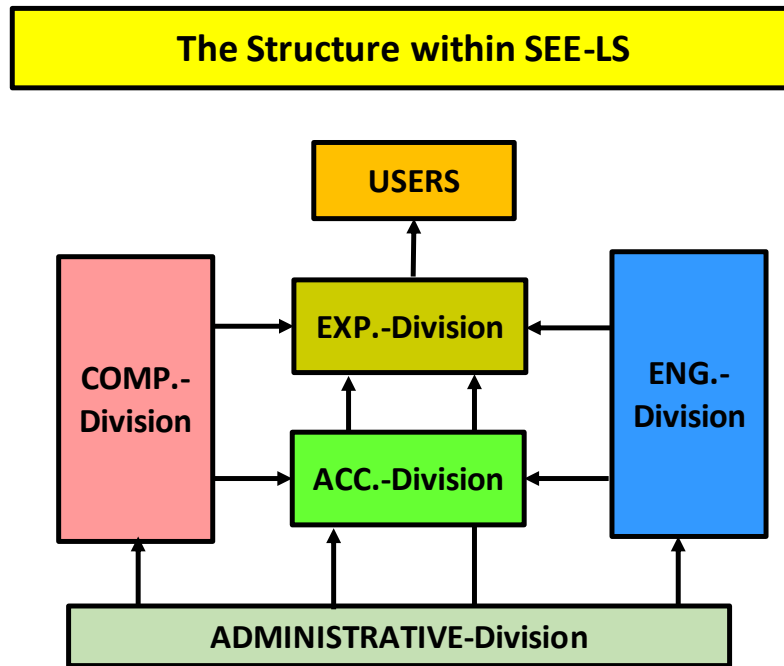


Fig. 17.2: The relationship between the different divisions of the SEE-LS